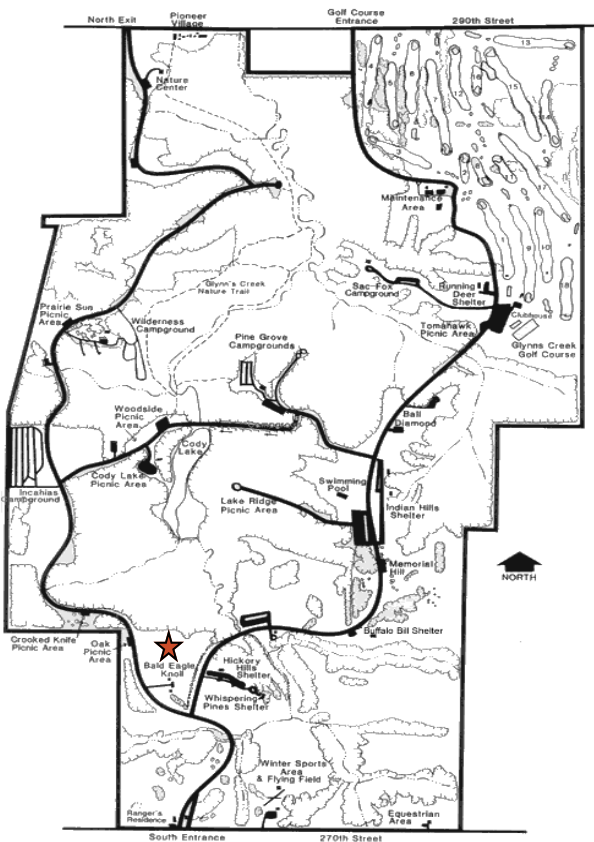


Directions to Scott County Park

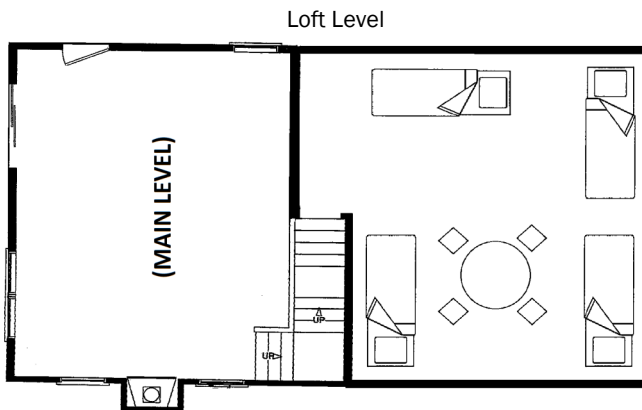
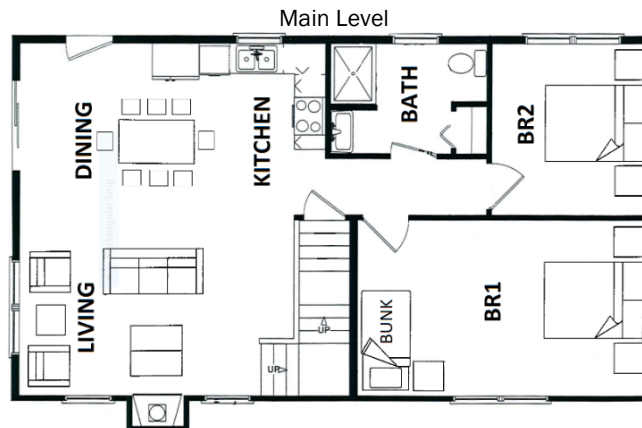
Exit #129 from U.S. 61
East on 267th Street
North on Scott Park Road
East on 270th Street
Entrance on Left



Map of Scott County Park



Cabin Layout



Scott County
Conservation
Board

Scott County Conservation Board Office

14910—110th Avenue

Phone: 563-328-3280

Fax: 563-381-2805

E-mail: conservation@scottcountyiowa.com



BALD EAGLE LOFT CABIN

Located at:

Scott County Park

18850—270th Street

Eldridge, IA 52748

For Reservations:

(563) 328-3282 Ext 1

www.scottcountyiowa.com/conservation



BALD EAGLE LOFT CABIN FEATURES:

- 1484sq. feet of living space (24' x 42' cabin)
- ADA accessible
- Modern bathroom with shower
- Two bedrooms. One with queen and twin-size bunk beds, other with a queen bed only
- Upper level loft space with 4 single beds
- Full Kitchen – stove/oven, microwave, refrigerator, sink, dishwasher, table & 8 chairs with place settings, coffee pot, toaster, pots, pans, and cooking utensils
- Gas fireplace, heat & air conditioning
- Covered porch, picnic table and fire ring
- Vehicle parking for 4 vehicles
- Wireless Internet Access available
- Firewood can be purchased at the park

SUPPLIES PROVIDED:

- Toilet tissue, dish soap, & cleaning supplies
- Broom, dustpan & mop
- Waste baskets and garbage bags

RENTER WILL NEED TO BRING:

- Complete bedding with pillows, sheets, blankets and/or sleeping bags
- Dish cloth and towels
- All food & beverage supplies
- All bath linens and toiletries
- Specialty cooking utensils
- TV, radio, alarm clock (optional)
- Lawn chairs (recommended)



RESERVATION INFORMATION:

\$180.00 per night or **\$1080.00** per week

(Payment by cash or credit card only)

- **\$180.00 Refundable Damage/Cleanup Deposit** due at check-in (credit card only)
- First night fee payable at time of booking, balance due at check-in
- Maximum capacity is ten people



CABIN POLICY:

- Cabins are designed for family usage. No parties, reunions, or large gatherings are allowed, and renter agrees to abide by the Board established maximum cabin capacity.
- A minimum of two consecutive nights rental is required, with a maximum stay of two weeks in a 30 day period.
- Reservations may be made up to a year in advance.
- In addition to the non-refundable Rental Fee, a refundable Damage Deposit is required.
- The cabin is a strictly enforced **NO SMOKING** facility.
- No pets allowed.
- Kegs are not allowed in the cabin areas or in the campgrounds.
- No subletting of cabin permitted.
- No one under 21 years of age is allowed to rent the cabins.
- No tents or campers allowed in cabin area.
- Parking allowed in designated areas only, no roadside parking or parking on the grass.
- Cabin furniture must remain inside the cabin.
- Check In time is 3 – 5 p.m., unless prior arrangements have been made.
- Renter must check-out by 11:00 a.m. on the last day of reservation.
- Failure to follow the Cleanup Guidelines, loss of inventory, or damages to property will result in forfeiture of all or part of the deposit.
- There are **NO REFUNDS** for cancellations or changes. Requests for consideration in the case of emergencies must be made in writing to the Conservation Board.
- Renters and Visitors must comply with Park Hours. All other Scott County Conservation Board park and campground rules apply. Violation of any park rules or regulations may result in fines, use privileges being rescinded, and forfeiture of reservation and/or deposit fees.
- Scott County Conservation Board reserves the right of management staff to enter cabin in an emergency, to inspect, and/or replenish supplies.